

27th January 2014

News

Wholeship BoM Dashboard Upgrade

As part of the effort to organise the Bill of Materials (BoM) data to support the completion of Ship 01 and the block handover process for Ship 02 the Wholeship BoM dashboard is being upgraded. This is not an upgrade to the software that is used to manage the dashboard, but a change to the data within the dashboard. The aim is to move from a federated BoM to a consolidated BoM. Further details of the changes will be available over the next few weeks.

The changes will be implemented from mid-February. The old Wholeship BoM dashboard and the new Wholeship BoM dashboard will run in parallel for a number of weeks to allow people to transition between the two. Unfortunately it will not be possible to migrate user reports from the old BoM dashboard to the new therefore during this parallel run period users should re-create their reports in the new dashboard by reference to the reports in the old dashboard. For further information please contact Ian Lorimer

Shaft Installation

Rolls Royce have completed HMS Queen Elizabeth Port and Starboard Line of Sight, now ready for commencement of shaft installation. The first sections of shaft arrived in Rosyth on Thursday 24th January with the lift taking place on Sunday 26th January.



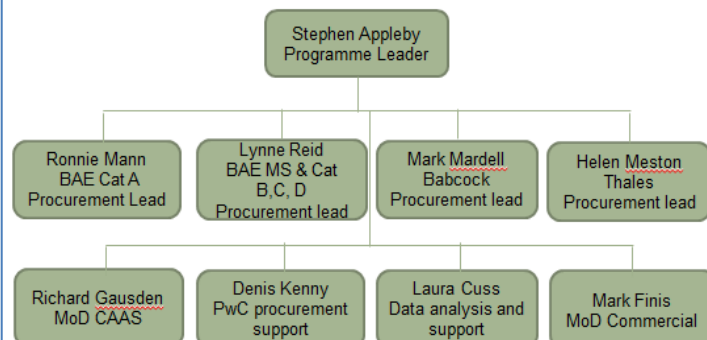
Spotlight on... The Tiger Team



After the recent announcement from the Secretary of State regarding the renegotiated deal of the Carriers, the commercial environment we work in is a very different one. The ACA must achieve extremely challenging cost targets. If these targets are not achieved then the programme rapidly loses its fee. Conversely beating cost targets significantly increases our fee. Hitting or improving on cost targets is therefore critical to the programme.

As a key element of achieving these targets a new team has been set up to help facilitate the cost reductions required in the Supply Chain across the programme. The team, headed up by Stephen Appleby, will work to support the existing teams to analyse the targets and their breakdown by suppliers, to develop a negotiation plan, help to negotiate contracts and draw up documentation of agreements, record the savings and verify the outcome.

In total, the team is looking to make savings of circa 5-10% of remaining spend. through various channels of renegotiating deals and implementing process improvements with our suppliers. The team will work on this project throughout 2014 which is critical to the financial success of the programme. The team will support the achievement of Supply Chain cost targets across the programme.



HMS Queen Elizabeth Rosyth

HMS Queen Elizabeth LB04:

- The formal report has now been issued following last week's DQAFF (Defence and Quality Assurance Field Force) audit on ring Q. Feedback from the audit has been largely positive and a list of actions has been formulated and issued to the relevant parties.
- There has been a continued drive to complete the compartment inspections on 4 deck. It is forecast that 14 compartments will be achieved; meaning that rings S through to ring N will be completed in their entirety, leaving two compartments to achieve on ring M.
- In addition to this, three more compartments have been signed off with the client. These were a stairwell in 8M, the hospital passageway in 5M and a passageway in 5Q.
- In support of the inspection process all trades have been working through the pre-requisite activities. Two behind lining inspections (6PC0 and 5QX4) are expected to be signed off by Lloyds this week and four insulation ITR's have been washed up.
- The electrical team have forecast that circa 2000M of cable will be installed with 1500 cores terminated with the pipe testers expecting to complete testing of 175 spools.
- Finally, the IA (Installation Audit) programme is continuing to run ahead of schedule with two further test paths completed and handed over to the commissioning team. This gives a total of 161 achieved against a baseline plan of 34.

Damage Control Zone 4

- UB14 outfitting package is underway and terminations released.
- P01 activities are progressing well throughout all sponsors and a number of compartments are now at paint and insulation.
- Plans are currently being made for the flame spraying of the GT intake splitters which will take place in January 2014.
- Scaffolding access and final welding of the catwalks at SP07, SP08, SP09 & SP10 are progressing.
- Aft aircraft lift guide rails are now being installed.
- SB03 to SB04 and CB04 (A to D) link-up integration work continues to progress.

- The final validation of scope is now complete at 8, 9 and 0 decks, with approx. 250 additional items identified; this work is currently being planned.
- Cable routes at 5LZ0 through to LB04 have now opened up and the focus is now on priority compartments at 6 & 7 deck.

Tanks

- Compartment 8HA5 (Cofferdam) successfully achieved its ITR-06 (Air Test) and was signed off by the client.
- As the Blast Programme continues to progress, Compartments 0BX0 (SW Ballast Tank), 0MC0 (Dieso Tank) and OPY0 (AVCAT Tank) were all offered to inspection for their ITR-09 (Blast Containment) inspection.
- 0AX0 (SW Ballast Tank), 0MX6 and 0MX7 (Dieso Tanks) have been offered to Quality Control for their ITR 10 Blast Inspection and are expected to be signed-off over the weekend.

Shaft Programme

- All major welding completed on the Tunnel Bearings and 'A' Frame Brackets.
- All boring and machining operations on the 'A' Frame brackets have now been successfully completed by Metalock.
- The Starboard Deep Sea Seal Mounting Ring is now aligned in preparation for welding to commence.

Hull Programme

- Preparation for the re-installation of the hull valves is now underway, pending completion of the blast and paint programme.

Damage Control Zone 1/2

- GTA upper level vent installation commenced and clashes are being cleared.
- The internal painting of the Mast Cap Base compartments is now and has moved to insulation.
- Exhaust ventilation from DG space to forward island has passed it's inspection and has been handed to Ticon for pinning.
- 4B Cross passage paint is complete, and has moved to insulation.
- 4 deck port and starboard passage removal of scaff commenced from forward end.
- GTA lower; all scaffolding has been removed and walkway installation has commenced.
- 3C cabin space inspection complete behind linings and moved into cabin final position.

Damage Control Zone 5

- Aft crane sponson on CB05 was due to be erected on Friday 24th January..
- SP10 catwalk expected to be erected Saturday 25th January.
- SP12 catwalks to be erected Sunday 25th January.
- The erections are subject to weather conditions being suitable.
- Compartment 4UZO shotblasted and primed.

Undocking

Blast & Paint

- Preparations for hull blast and paint are nearing completion

Shaft Alignment

- Port shaft line - Main A and Stern tube bearings fitted with resin chocking completed, boring out of Intermediate A on schedule to complete 15 December 13.
- Starboard shaft line – Main A and Stern tube bearings fitted with preparations being finalised for resin chocking schedule start 17 December 13.

HMS Prince of Wales Tyne

HMS Prince of Wales CB03:

- Ring K was moved down the west quay into its final build position adjacent to Ring J with the green material removed before movement.
- Painting and insulation will continue in the half ring integration areas ahead of routed system installation
- Ring H and J continue with outfit activities with compartments in very mature state.
- Ring LK completed it's paint cell window last week with all scope completed in the cell ahead of movement to the west quay and the join up activities.
- Ring L flight deck units are now 3D with bulkheads being erected; the 2 deck units are being welded to the transportation grillage.

Merseyside

HMS Prince of Wales CB02:

- The centre section of Ring G flight deck was erected onto 2 deck with the lock out equipment in position last weekend (see below).
- This is the first flight deck section to go up and will now be welded out before the Port and Starboard units are moved into place over the coming weeks.
- Outfit activities continue in Ring G 4 deck with painting and insulation ongoing and more High Pressure Sea Water pipes being installed.
- Work continue on Ring F manufacture with bulkheads being erected on 2 units and deep T's being welded out in another.



HMS Prince of Wales CB04

- Early days of manufacture are occurring with Ring A bulkheads being nested.

Portsmouth

HMS Prince of Wales CB02:

- HB Hydraulics continue to progress well – installing a further 77 pipes on A ring ahead of recovery plan.
- On target to achieve 19 PO2 inspections planned for 24th January on Ring B (3 Deck).
- Painting on Ring A (2 Deck) has started – due to complete 2nd February.
- Following preparation last week, Unit C223 (see over page) has been lifted into place on Ring C for consolidation.
- Unit C222 moved around from Hall A to Hall B ready for erection and consolidation onto Ring C next week.
- Outfit activities have now started on Ring B (4 Deck), progressing well.



HMS Prince of Wales LB02:

- All X-Rays on the last join up have been completed with 100% pass rate. Structural completion has been completed to plan and this now allows the paperwork to be completed and put into CMS.
- The phase 3 tank testing is progressing well in line with the plan with over 60% complete.
- Hull painting on the back of G Ring is nearing completion to allow some early CHOIs to take place.
- A plan is also in work for completion of the outer Hull including shot blasting of keel. This work will follow on from the tank testing plan.
- The Sea Chest in G ring is underway and going well along with preparations for sea transportation requirements.
- Electrical cable reeve is progressing with 112km, and once BLI's are complete in F ring, the cabins will be back in position and more terminations will be available.
- 12 Compartment Handover Inspections are planned for next week.

Govan

HMS Prince of Wales LB03:

- A care and protection audit by the customer was undertaken this last week with satisfactory rating, highlighting a continued improvement in housekeeping across the block.
- The compartment handover inspection programme is progressing well with nine CHOIs achieved in week 1403 and the target of 14 CHOIs expected to be achieved last week, one of which is the upper auxiliary machinery space, a large and complex area, with a minimal amount of NCs (see top right).
- This means that there now 429 CHOI's completed out of 520 taking the programme to 83% complete.
- Ticon are continuing to push on with the progression of ceilings and linings, across the critical area of 5 deck.



- Imtech are continuing to progress, installing 70m of vent last week, working in critical areas such as ATU compartments and across 5 deck opening up areas for subsequent trades.
- SSSL are continuing with the compartment paint programme and expect to complete both pipe tunnel compartments over the weekend, allowing Ticon to begin insulation.
- This week over 50 pipe spools have been mechanically audited, with a subsequent 165 spools being pressure tested.
- BBES continue to surpass the LB03 cable meterage target by reeving a further 988m of their 273km target and BAE's electricians continue to progress with 50,168 terminations completed and 5,061 cables checkwired to date.

HMS Prince of Wales LB04:

- To date there are 144 (92%) units in preparation with 125 (80%) having progressed into the fabrication stages and 102 (65%) have been successfully delivered into the Shipbuild Outfitting Hall.
- Week 4 saw the successful unit assembly of three units (LM29, LQ17 & LM10) and two dry surveys were achieved on units LP45 and LM43.
- The cabin installation continues this week with more than 40 (20%) cabins and wet modules now installed on the block. There are approximately six cabins delivered daily until the end of week 6 when the delivery programme goes into recess while the remaining areas are erected.
- The remaining cabin areas are also making good progress with BLIs being conducted and the initial painting has been started on 6 deck.
- Pipe installation continues to progress well, approx. 800 pipes ahead of the plan with 6274 fitted compared to 5497 planned. This has allowed the mechanical inspections to take place earlier with 644 now inspected against a planned figure of 140. Following on from this is the pipe testing, where 383 pipes have been tested against a plan of 44 pipes.