

ACA

Weekly Communication

News

LB03 Handover

HMS Queen Elizabeth LB03 is entering the final weeks of the planned run-down of engineering change and affected scope. Progress has remained consistent with weekly meetings in place between BAE Systems and Babcock to provide confidence to both parties ahead of final handover on the 30th August.

QEC Boosts Local Economies

Monday's edition of The Herald ran a story describing how the QEC programme has contributed more than £300 million in contracts to the local economy.

SHE

HMS Prince of Wales LB03's positive trend continues with another week with zero accidents or incidents. There have been no lost working day cases on LB03 since April 2012.

On HMS Prince of Wales LB04 there have been no recordable incidents or accidents in the shipbuild outfit hall or in the fabrication area.



Spotlight on....

Aaron Cameron, Insulator

Where did you start your career?

I completed a five year apprenticeship in joinery with KDM Shop Fitting in Dalgety Bay.



How long have you worked on the QEC Programme for?

I first started at Rosyth working with Pyeroy in April of this year before moving across to work with Ticon on HMS Queen Elizabeth. I'm hoping to stay with Ticon beyond the first Ship and get to work on HMS Prince of Wales.

What is your role entail?

I am working on the outfitting of the Ship and so as an insulator I am responsible for the insulation of ventilation systems.

Have you seen any change in the way SHE is addressed on QEC?

Since starting here there has always been a real focus on health and safety. The guys are good at tidying up behind themselves and there are always safety reps on the Ship to address anything that could be seen as a risk.

What do you do in your spare time?

I just enjoy going out with friends and relaxing. I play football and also like going to matches. My team is Celtic, so I try to see them play most weekends.

HMS Queen Elizabeth

Rosyth

HMS Queen Elizabeth LB03:

- Following initial inspection last week the Issues Centre has been formally signed off by the ACA for compartment handover inspection (CHOI)
- The main galley area remains as the only compartment to achieve CHOI
- A walk-round of the galley has taken place with representation from the acceptance team and the client to address the remaining issues prior to formal inspection and sign off
- All parties are working towards formal sign off next week

HMS Queen Elizabeth LB04:

- There has been further progress closing out the remaining compartment handover inspection (CHOI) in ring R
- All compartments have now been put through their initial inspections with four expected to be signed off this week. The remaining compartments are forecast to be washed up with the client next week
- CHOI's have been achieved on all rings this week including the main passageway in 6Q and further cabins in 6P. The remaining cabins are scheduled to be washed up next week
- In total it is forecast that circa 15 compartments will be achieved throughout the block
- There is continued focus on pressure testing throughout the block, with operations working through pre-requisite mechanical inspections on test paths ahead of planned tests
- The shaft installation programme continues to build momentum, with length batons now manufactured to the approved dimensions and positioned at ship. This has enabled precise positioning of the associated machinery to commence

Tanks

Sea Chest compartment, 0GZ8, was successfully signed off by the customer last week. Compartments 0GA0 and 0QA3, both sea chests, have been offered up for CCI on Thursday 22nd August.

Assembly

The main focus of the assembly team at Rosyth is the continuation of the quality control inspections on the Aft end of the structure. On completion of these final areas, namely CB05/CB06 and Aft Sponsons, will then commence their outfit phase. Meanwhile, at the forward end of the ship in the more advanced areas of the outfitting, the focus is moving from volume based installation to system management and completions.

Manufacturing

Work continues to progress on SP11 and SP12 with structural surveys and compartment handover inspections now commencing in preparation for handover to the Assembly team.

The Mastcap for HMS Prince of Wales has now moved from Bay 1 in the Syncrolift to one of the heavy handling tents where work will continue to progress. Work continues to progress on sponsons for HMS Prince of Wales in the fabrication and Syncrolift bays.

Appledore

The sponson 10 forward catwalks for HMS Queen Elizabeth will be delivered to Rosyth this week with the Aft catwalks for SP10 are scheduled for transportation next week. The first batch of sponson 2 units; 3, 4 & 14 for HMS Prince of Wales are near completion and will be moved to the covered facility for final paint system to be applied.

HMS Prince of Wales

Portsmouth

HMS Prince of Wales LB02:

- Painting has been completed on D ring 7 deck, which has enabled outfitting to start ahead of join up
- Cabins have been delivered for D ring, and will be shipped into position week 33
- Behind Lining Inspections have been achieved and spaces are now complete ready to accept the cabins. (See below)
- The structural join up's of E-F-G continue and are on plan, with D ring join up week 37
- Painting on G ring 6 deck is finished and structures are now completing work in this area



HMS Prince of Wales CB02:

- C202 has now been erected on to the ring A build and transportation grillage (see below)
- The painting of unit C206 in Hall A is complete and this unit has been moved into Hall B
- C206 be erected on to the ring B build and transportation grillage this week
- There are 12 units in Hall A where the unit construction phase continues
- Paint is progressing well on unit C203 in Hall A
- Units C222 and C233 are in the steel production hall (SPH) preparation area
- Units C215, C216 and C225 are on the panel line in the SPH



Govan

HMS Prince of Wales LB03:

- A customer care and protection audit was conducted last week with the feedback indicating a satisfactory rating
- The operations team are in the process of handing over the few remaining compartments to the sub-contractor for paint
- Cable reeving is progressing well with a further 12.5km of cable pulled; bringing the total meters pulled to 199km (74% complete) against a planned 169km
- Nearly 27,000 terminations (42% complete) have been completed
- The paint programme continues with the gloss coating of 5K pipe passage and the spraying of the port stabilizer compartment
- The blasting of the aft machinery space took place over the weekend
- Pipe installation and testing is continuing to progress well with over 8,500 pipe installed to date (92% complete)
- Compartment handover inspections have been progressing with 14 senior rate's cabins inspected in ring K
- Total number of cabins expected to date 112

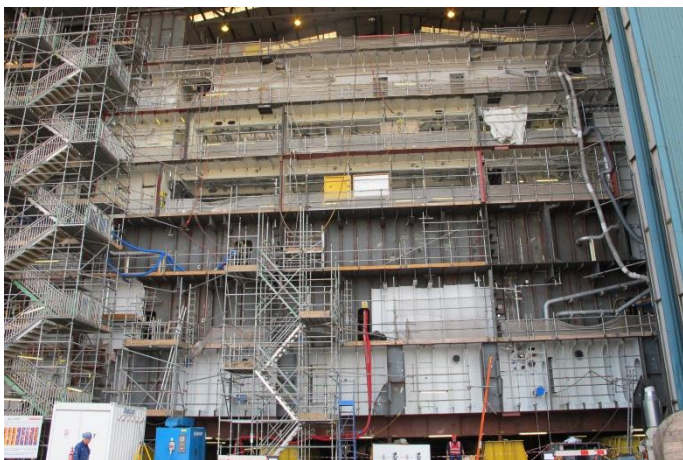


Image above shows LB03 in the SBOH

HMS Prince of Wales LB04:

- There are 84 units in preparation with 76 in the subsequent fabrication stage and 64 in the shipbuild outfit hall bays 1 and 3
- Units LS16 and LS47 were erected last week and the dry survey of LR17 was successfully completed to plan
- Preparations on Rings M/N continue with the erection of the containment of the external shell and the Diesel Generator compartments and Propulsion Motor space
- The air testing of tanks on these rings is nearing completion, with only 0MX6 remaining to be completed this week

Tyne

HMS Prince of Wales CB03:

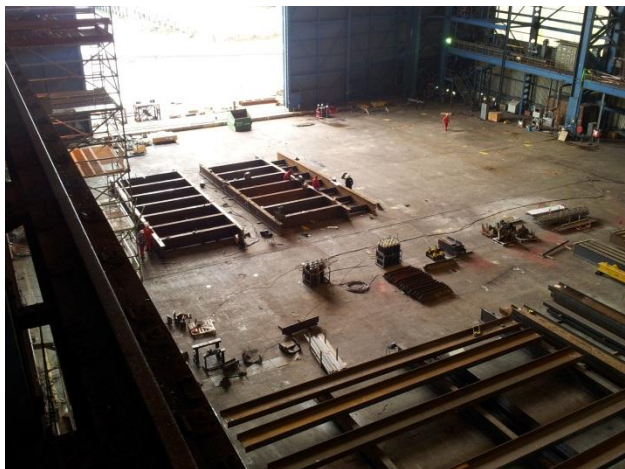
- Work continues to complete the join up for ring H (shown on the dockside on the image below).
- Welding of the units was completed late last week and painting commenced over the weekend in way of the welding.
- Insulation continues at pace in the port and starboard compartments and the first duct was installed at the end of last week.
- A tremendous effort was put in by A&P, SSSL and Ticon to complete compartment 2JA0 in way of the lock out ATUs; allowing them to be lifted into place over the weekend and Unit 1J05 to be added to the block.
- Ring K units are now on the supports and the first bulkheads have been erected.
- Ring LK decks are now on the panel line.



Merseyside

HMS Prince of Wales CB02

- Work continues on ring G of CB02 with face flat/bar cutting continuing
- 2dk plates are being tacked and welded for units 228 and 229.
- The bulkheads are in fabrication in Bay 11
- The Con Hall, including shell bulkheads; 3dk units welded and being barred out for Units 220 and 221.
- Grillage areas being marked out in preparation for laying in position next week.



The image above shows grillage areas for units 220 and 221



Units 220 and 221 3dk and bulkheads shown above



Image above shows 2dk plates being welded for units 228 and 229

Follow your programme @QEClassCarriers

[QEClass Carriers \(QEClassCarriers\) on Twitter](#)